

# WHEEL LOADER



# SW405

## STANDARD FEATURES

- ➔ Powerful Deutz Engine
- ➔ 360°View Camera
- ➔ ISO Quick Coupler
- ➔ Air suspension seat
- ➔ Third Function Hydraulics
- ➔ Reversible Fan

**170 kW / 2300 rpm**  
Rated power

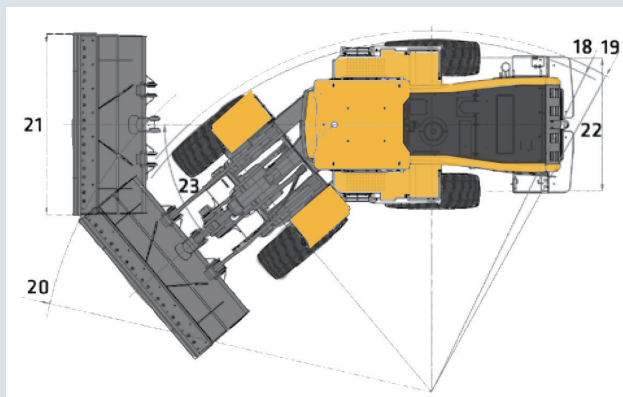
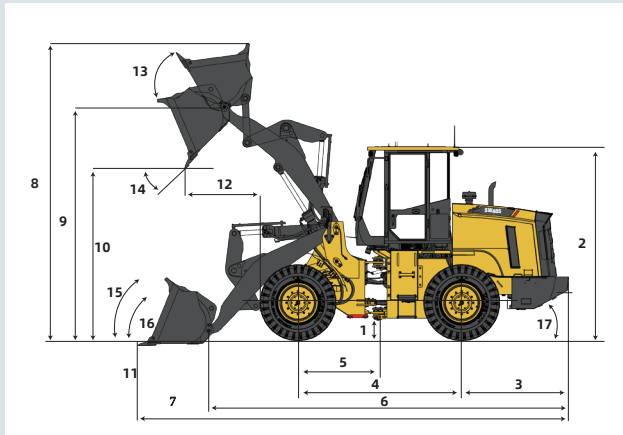
**3.2 m<sup>3</sup>**  
Bucket Capacity

**18,500 kg**  
Operating Weight

**14,500 kg**  
Straight Turn Tipping Load

**13,100 kg**  
Full-Turn Tipping Load

## DIMENSIONS



## DIMENSIONS

1 Ground Clearance	430 mm
2 Height to Top of Cab	3580 mm
3 Center Line of Rear Axle to Edge of Counterweight	2335 mm
4 Wheelbase	3200 mm
5 Center Line of Front Axle to Center Pivot	1600 mm
6 Overall length without Attachment	7040 mm
7 Overall length with bucket	8180 mm
8 Max. Dump Height	5415 mm
9 Hinge Pin Height at Max. Lift	4145 mm
10 Dump Clearance at Max. Lift	3100 mm
11 Dig Depth, Level Bucket	30 mm
12 Reach at Max. Lift and 45° Discharge	1185 mm
13 Roll Back at Max. Lift	58°
14 Dump Angle at Max. Lift and Dump	45°
15 Roll Back at Carry Height	50°
16 Roll Back at Ground	45°
17 Tail Angle to the Rear Wheel	27°
18 Maximum turn radius over tyres	5635 mm
19 Maximum turn radius over counterweight	5911 mm
20 Maximum turn radius over shovel	6465 mm
21 Width of the Bucket	3015 mm
22 Width	2200 mm
23 Articulation Angle	+/- 40°

Based on theoretical calculation at max flow with no load. Subject to alterations. In the interest of continual equipment development, SANY UK Inc. reserves the right to change these specifications at any time without prior notification.



STANDARD AND OPTIONAL EQUIPMENT

s = standard / o = optional

SW405	ENGINE
s	Exhaust aftertreatment (DPF+SCR)
s	Keyless start
s	Engine emergency stop (in cab)
s	P/E Patten
s	Engine preheater
s	Automatic hydraulic reversible fan
s	Cold start aid (air pre-heated)
POWER TRAIN	
s	Gear selector lever (steering-column)
s	Fully automatic shifting 1-4, H/L Patten & Manual
s	Automatic transmission kick down
s	Clutch-cut off
s	Service brake, 4-wheel, wet-type, hydraulic brake
s	Parking brake, electronically controlled, hydraulic caliper disc brake
s	Differential lock front axle (manual)
HYDRAULIC	
o	ISO quick coupler
s	Bucket self-leveling and return to dig
s	Dual brake pedals
s	3rd function valve
s	Hydraulic quick coupler lines
s	Ride control system
s	Bucket kick-out
s	Bucket level indicator
s	Real time bucket height read out via display



STANDARD AND OPTIONAL EQUIPMENT

s = standard / o = optional

SW405	CAB
s	Cab with ROPS / FOPS certification
s	Emergency hammer
s	Rear mirrors, outside(2) with heated function, inside(1)
s	Sun visor, front window
s	Air-suspension seat (cloth, heated)
s	Seat belt, 2-point retractable
s	Armrest adjustable in multiple directions
s	360° view camera with dedicated monitor
s	Rear view camera
s	7" smart colour display
s	Auto air conditioner
s	Rear window defrost
<b>ELECTRICAL</b>	
s	Battery disconnect switch
s	24V system
s	Converter kit with 12V auxiliary power outlet
s	AM/FM Bluetooth® radio with USB port
s	Reverse alarm
s	Travel acoustic alarm
s	Travel strobe light alarm
s	Cab mounted LED work light package (dual front and rear)
s	Dual maintenance free batteries rated @ 950 cca
s	120 Amp Alternator
<b>OTHER</b>	
s	Tyres: 23:5R25 L3 Radial (3 piece rims)
s	Front and rear steel fenders
s	Articulation locking bar
s	Lift arm locking bar
<b>o</b>	Automatic lubrication system

In the interest of continual equipment development, SANY UK Inc. reserves the right to change these specifications at any time without prior notification.

# PRODUCT SPECIFICATIONS WHEEL LOADER ||| SW405

## MACHINE PARAMETERS

### WEIGHT

Operating Weight	18 500 kg
------------------	-----------

### ENGINE

Deutz TCD7.8

Rated power	170 kW / 2300 rpm
Max Gross Torque	1308 Nm
Displacement	7.8 L

### OPERATING

Bucket Capacity	3.2 m <sup>3</sup>
Breakout Force	180 kN
Tipping Load Straight	14500 kg
Tipping Load @ Full Turn	13100 kg
Clearance (full lift 45° dump)	3100 mm
Reach (full lift 45° dump)	1185 mm

### HYDRAULIC SYSTEM

Max Flow	306.6 L/Min
Max Pressure	28 MPa

### HYDRAULIC CYCLE TIMES

Raise	5.4 sec
Dump	1.9 sec
Float Down	3.3 sec
Total Cycle Time	10.6 sec

### SERVICE CAPACITIES

Fuel Tank	300 L
Cooling System	43 L
Engine Crankcase	23 L
Transmission	35 L
Front Axle	28 L
Rear Axle	28 L
Hydraulic Tank	290 L
DEF Tank	20 L

### TRANSMISSION

Shift Modes	Automatic, Manual, Kick Down
Forward Gear 1–4	7.3/13.5/26/40 km/h
Reverse Gear 1–3	7.3/13.5/26 km/h

### POWER TRAIN

Front Axle	Fixed
Traction Aid	Manual Differential Lock
Rear Axle	Oscillating
Traction Aid	Open Differential
Service Brakes	Wet Disc
Parking Brake	Disk Brake
Tyres	23:5R25 L3 Radial



SANY UK

[sanyuk.com](http://sanyuk.com)



SANY HEAVY MACHINERY (UK) LTD  
[info@sanyuk.com](mailto:info@sanyuk.com)  
[www.sanyuk.com](http://www.sanyuk.com)

**INDUSTRY'S  
 STRONGEST  
 STANDARD  
 WARRANTY**

**5-YEAR\*  
 5,000 HOURS**

\*Warranty applies to 2023 Excavator  
 and Wheel Loader models only