

WHEEL LOADER



SW305

STANDARD FEATURES

- ➔ Powerful Deutz Engine
- ➔ 360°View Camera
- ➔ ISO Quick Coupler
- ➔ Air suspension seat
- ➔ Third Function Hydraulics
- ➔ Reversible Fan

129 kW / 2200 rpm
Rated power

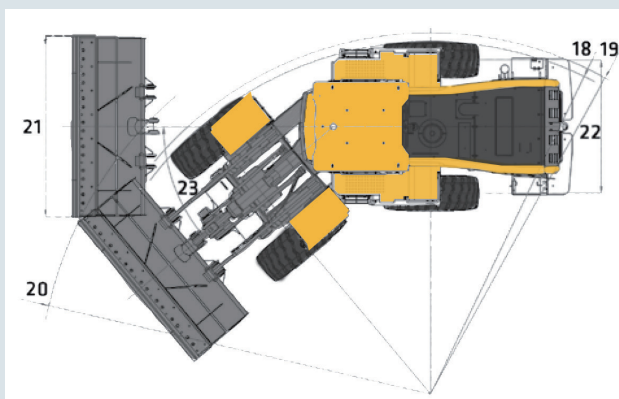
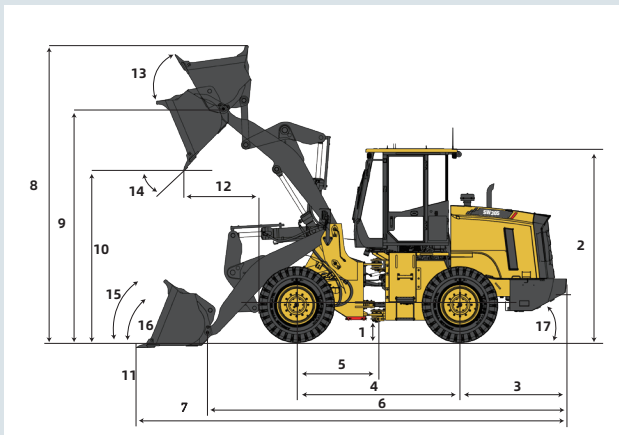
2.3 m³
Bucket Capacity

14,500 kg
Operating Weight

8,899 kg
Straight Turn Tipping Load

7,714 kg
Full-Turn Tipping Load

DIMENSIONS



DIMENSIONS

1	Ground Clearance	407 mm
2	Height to Top of Cab	3405 mm
3	Center Line of Rear Axle to Edge of Counterweight	1911 mm
4	Wheelbase	3000 mm
5	Center Line of Front Axle to Center Pivot	1480 mm
6	Overall length without Attachment	6226 mm
7	Overall length with bucket	7518 mm
8	Max. Dump Height	5226 mm
9	Hinge Pin Height at Max. Lift	3845 mm
10	Dump Clearance at Max. Lift	2689 mm
11	Dig Depth, Level Bucket	122 mm
12	Reach at Max. Lift and 45° Discharge	1038 mm
13	Roll Back at Max. Lift	61°
14	Dump Angle at Max. Lift and Dump	45°
15	Roll Back at Carry Height	49°
16	Roll Back at Ground	42°
17	Tail Angle to the Rear Wheel	28°
18	Maximum turn radius over tyres	5382 mm
19	Maximum turn radius over counterweight	5365 mm
20	Maximum turn radius over shovel	5969 mm
21	Width of the Bucket	2545 mm
22	Width	2045 mm
23	Articulation Angle	+/-40°

Based on theoretical calculation at max flow with no load. Subject to alterations. In the interest of continual equipment development, SANY UK Inc. reserves the right to change these specifications at any time without prior notification.



STANDARD AND OPTIONAL EQUIPMENT

s = standard / o = optional

SW305	ENGINE
s	Exhaust aftertreatment (DPF+SCR)
s	Keyless start
s	Engine emergency stop (in cab)
s	P/E Patten
s	Engine preheater
s	Automatic hydraulic reversible fan
s	Cold start aid (air pre-heated)
POWER TRAIN	
s	Gear selector lever (steering-column)
s	Fully automatic shifting 1-4, H/L Patten & Manual
s	Automatic transmission kick down
s	Clutch-cut off
s	Service brake, 4-wheel, wet-type, hydraulic brake
s	Parking brake, electronically controlled, hydraulic caliper disc brake
s	Differential lock front axle (manual)
HYDRAULIC	
o	ISO quick coupler
s	Bucket self-leveling and return to dig
s	Full variable load-sensing system with steering priority
s	Single-lever EH joystick with FNR+KD+horn+3rd function proportional control with detent
s	Dual brake pedals
s	3rd function valve
s	Hydraulic quick coupler lines
s	Ride control system
s	Bucket kick-out
s	Bucket level indicator
s	Real time bucket height read out via display



STANDARD AND OPTIONAL EQUIPMENT

s = standard / o = optional

SW305 CAB	
s	Cab with ROPS / FOPS certification
s	Steering wheel with turning signal control lever
s	Emergency hammer
s	Rear window, heated
s	Auto air conditioner
s	Sun visor, front window
s	Air-Suspension seat (cloth, heated)
s	Seat belt, 2-point retractable
s	Armrest adjustable in multiple directions
s	360° view camera
s	7 inch smart colour display
ELECTRICAL	
s	Battery disconnect switch
s	24V system, 2 x 12V batteries 120Ah
s	Converter kit with 12V auxiliary power outlet
s	AM/FM Bluetooth® radio with USB port
s	Reverse alarm
s	Travel acoustic alarm
s	Travel strobe light alarm
s	Cab mounted LED work light package (dual front & rear)
s	Battery main switch
s	Alternator 120 Amp
s	12V cab converter
OTHER	
s	Tyres: 20:5R25 L3 Radial (3 piece rim)
s	Bucket volume 2.3m ³ (Cutting edge, bolt-on)
s	Front and rear steel fenders
s	Liftarm locking bar
s	Articulation locking bar
o	Automatic lubrication system

In the interest of continual equipment development, SANY UK Inc. reserves the right to change these specifications at any time without prior notification.

PRODUCT SPECIFICATIONS WHEEL LOADER ||| **SW305**

MACHINE PARAMETERS

WEIGHT

Operating Weight	14500 kg
------------------	----------

ENGINE Deutz TCD6.1

Rated power	129 kW / 2300 rpm
Max Gross Torque	750 Nm
Displacement	6.1 L

OPERATING

Bucket Capacity	2.3 m ³
Breakout Force	123 kN
Tipping Load Straight	8899 kg
Tipping Load @ Full Turn	7714 kg
Clearance (full lift 45° dump)	2689 mm
Reach (full lift 45° dump)	1038 mm

HYDRAULIC SYSTEM

Max Flow	220 L/Min
Max Pressure	27 MPa

HYDRAULIC CYCLE TIMES

Raise	5.6 sec
Dump	1.6 sec
Float Down	3.2 sec
Total Cycle Time	10.4 sec

SERVICE CAPACITIES

Fuel Tank	227 L
Cooling System	33 L
Engine Crankcase	15.5 L
Transmission	55 L
Front Axle	34.8 L
Rear A xle	34.8 L
Hydraulic Tank	128.7 L
DEF Tank	10 L

TRANSMISSION

Shift Modes	Automatic, Manual, Kick Down
Forward Gear 1-4	7/14/27/41 km/h
Reverse Gear 1-3	7/14/27 km/h

POWER TRAIN

Front Axle	Fixed
Traction Aid	Manual Differential Lock
Rear Axle	Oscillating
Traction Aid	Open Differential
Service Brakes	Wet Disc
Parking Brake	Disk Brake
Tyres	20:5R25 L3 Radial



SANY UK
sanyuk.com



SANY HEAVY MACHINERY (UK) LTD
info@sanyuk.com
www.sanyuk.com

**INDUSTRY'S
STRONGEST
STANDARD
WARRANTY**

**5-YEAR*
5,000 HOURS**

*Warranty applies to 2023 Excavator
and Wheel Loader models only