



SANY

Quality Changes the World

PRECISE POWER

CONSISTENTLY STRONG.
REMARKABLY VERSATILE.

CONSTRUCTION MACHINERY



CRAWLER EXCAVATOR **SY215C**

Engine
CUMMINS QSB6.7
Rated power
129 kW / 2200 rpm
Bucket capacity
1.2m³
Operating weight
24 000 kg

SANY

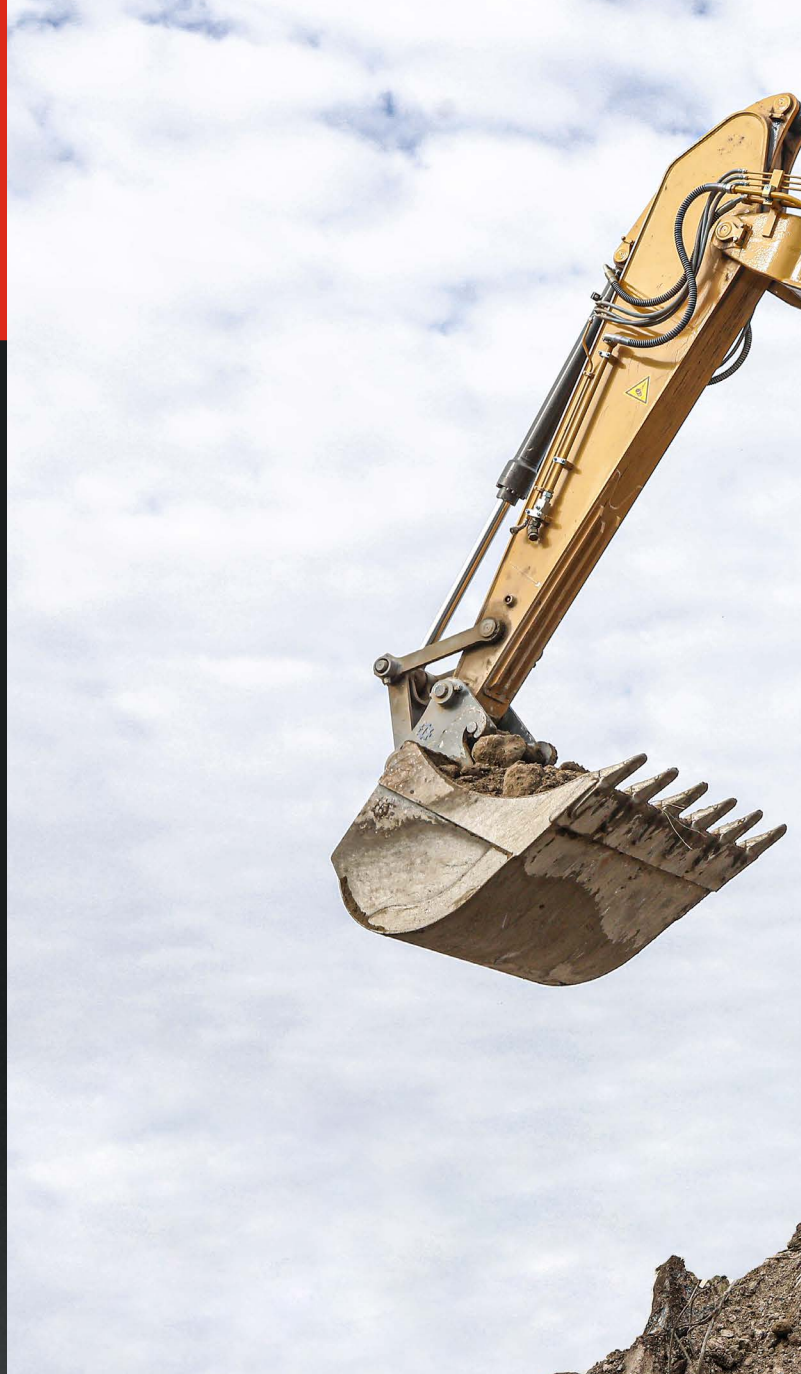
For challenging tasks, you need a first-class partner

Quality comes from experience. And from new ideas. This is why we combine these two crucial factors at SANY. This is because we are one of the world's leading producers, having sold more than **320 000** excavators in **10 years**. This means that you can always rely on sophisticated products that have been tried and tested in practice. An impressive **5–7%** of our annual turnover is dedicated to research and development.

320 000
EXCAVATORS SOLD IN
10 YEARS

5–7%
TURNOVER FOR RESEARCH
AND DEVELOPMENT

Quality Changes the World



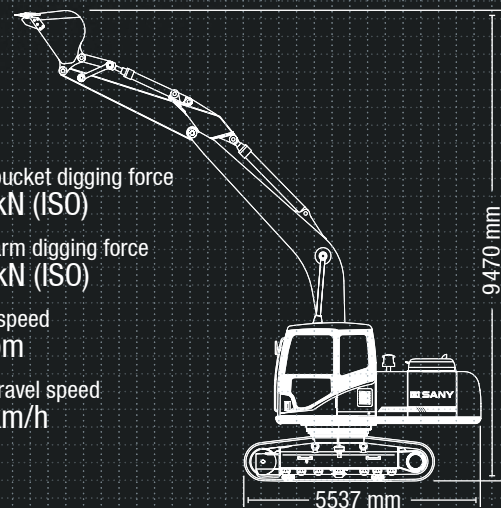
SY215C HARD FACTS

Max. bucket digging force
143 kN (ISO)

Max. arm digging force
115 kN (ISO)

Swingspeed
11 rpm

Max. travel speed
5.4 km/h





THE SPECIALIST WHEN IT COMES TO VERSATILITY

With the SANY SY215C crawler excavator, you get more done. No matter where used – it applies its power with precision. This is because every detail is specifically designed for the tough conditions on construction sites. This excavator is a real all-rounder and a specialist in every discipline, from quick loading to precise digging and powerful demolition work.

What particularly sets it apart is its ability to control its tremendous power with great precision – for maximum productivity and therefore a fast return on investment.

TOP PROPERTIES

ECONOMY

IT IS AS LOW IN CONSUMPTION AS IT IS POWERFUL IN PERFORMANCE

The highly efficient engine with common rail technology guarantees excellent performance. Four different operating modes for the various operating conditions precisely adjust the engine and hydraulic power to the requirements. This improves the excavator's response behaviour and ensures lower fuel consumption and reduced emissions.

QUALITY

Durable and robust – the SY215C can be used whenever the going gets tough. This means that it must be able to withstand a great deal. No problem for the SY215C, as with its reinforced, **extremely robust undercarriage** and particularly clean, **robot-welded seams**, it is exactly the right excavator for hard day-to-day work on construction sites.

USER EXPERIENCE

Comfortable workstation – the cabin of the SY215C leaves nothing to be desired. All of the controls are within easy reach from the air-suspension seat which supports the driver's back. **Maintenance and service support** is also easy to reach: Thanks to the large and easily accessible service doors and clear layout of the most important components, this work is **quick and easy** to complete.

DIMENSIONS

Agile power – the SY215C works through its programme quickly and with great power. This excavator has great power reserves in its 24 tonnes. The machine is mounted on a stable HD undercarriage so that it can be used to the full.



SAFETY

Safety as a production factor – it is only possible to work cost-effectively if you work safely. This is why the **large safety package** has everything included as standard, from a travel alarm to the rotating beacon, and from the boom safety valve to the overload warning for lifting and the camera.

COMPONENTS

High quality and tried-&-tested – the water-cooled Cummins diesel engine with common rail technology and AdBlue system guarantees **reliable performance**, even under tough working conditions. The complete package is rounded off by the finely tuned Kawasaki hydraulic system.

ECONOMY

Power and efficiency – the smart hydraulic control system adapts the pump power to the available engine power. This means **greater efficiency and lower fuel consumption**, thereby providing excellent **cost-effectiveness**.



SY215C

ECONOMY

Cost-effectiveness thanks to maximum flexibility

Whether digging, loading, demolishing, transporting, hammering, or performing other tasks, the SANY SY215C tackles a wide range of tasks without compromise – and without long changeover or waiting times. The pre-installed quick-coupler line means that many attachment devices can be fitted.



QUALITY

A very stable foundation

The machines have a great deal of work to do during their tough day-to-day work on construction sites. This is why – from the design stage, to selecting the materials used, quality and conducting the final checks – all excavators by SANY are designed to be robust. For instance, all welded seams are computer-controlled by robots – this maximum precision ensures stability and reliability.

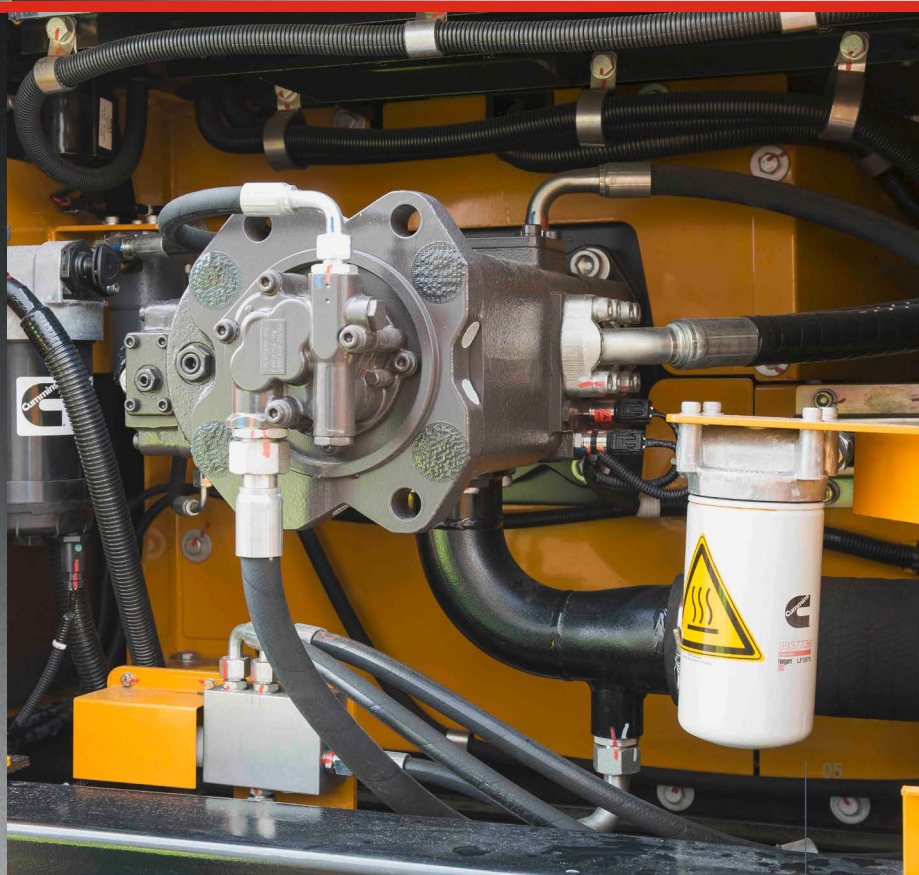
In addition, the robust, wide heavy-duty undercarriage provides a high level of stability. This allows the SY215C to optimally apply its power. Also good to know: All of the access panels are only made from metal.



COMPONENTS

Improved performance thanks to optimised hydraulics

The position-controlled hydraulic system adjusts the required pressure and oil quantity according to requirements. The powerful, variable piston pumps reach a flow rate of 2 x 241 l/min and therefore achieve a very high level of efficiency at a low engine speed.



EFFICIENCY, COST-EFFECTIVENESS AND USER EXPERIENCE

DIMENSIONS

UP TO THE TASK ON EVERY SURFACE

The SY215C's particularly stable heavy-duty undercarriage provides the maximum possible stability. Its welded reinforcements and the use of robust, high-strength steel ensure minimal wear, even when used continually under the maximum load.

The steel chains used also offer the highest quality standard – for a stable foundation on any surface.



USER EXPERIENCE

THE NEW COMFORT ZONE

For drivers to fully concentrate on their work, they first need to be sitting comfortably. The individually adjustable, air-suspension seat offers a comfortable workstation from which all of the controls are within easy reach. It goes without saying that the multifunctional control levers are located at the centre. This makes it possible to reliably and precisely control the attachment devices, directly relaying the control commands without delay. For even greater comfort: The standard equipment supplied includes the large monitor which can be set to several languages, the automatic climate control system which provides pleasant temperatures even in the summer, the powerful heating, the radio with an additional USB port for the driver's own audio devices and the large storage compartments for everything which the driver needs close to hand.





Our highlights – the added benefits SANY offers you:

- + A comfortable driver's cab
- + Fast, powerful hydraulics
- + A clear overview of instruments and display
- + Heavy-duty undercarriage
- + Extensive safety equipment
- + High-quality welded seams
- + ROPS/FOPS-certified



SAFETY

Best visibility even in poor lighting conditions

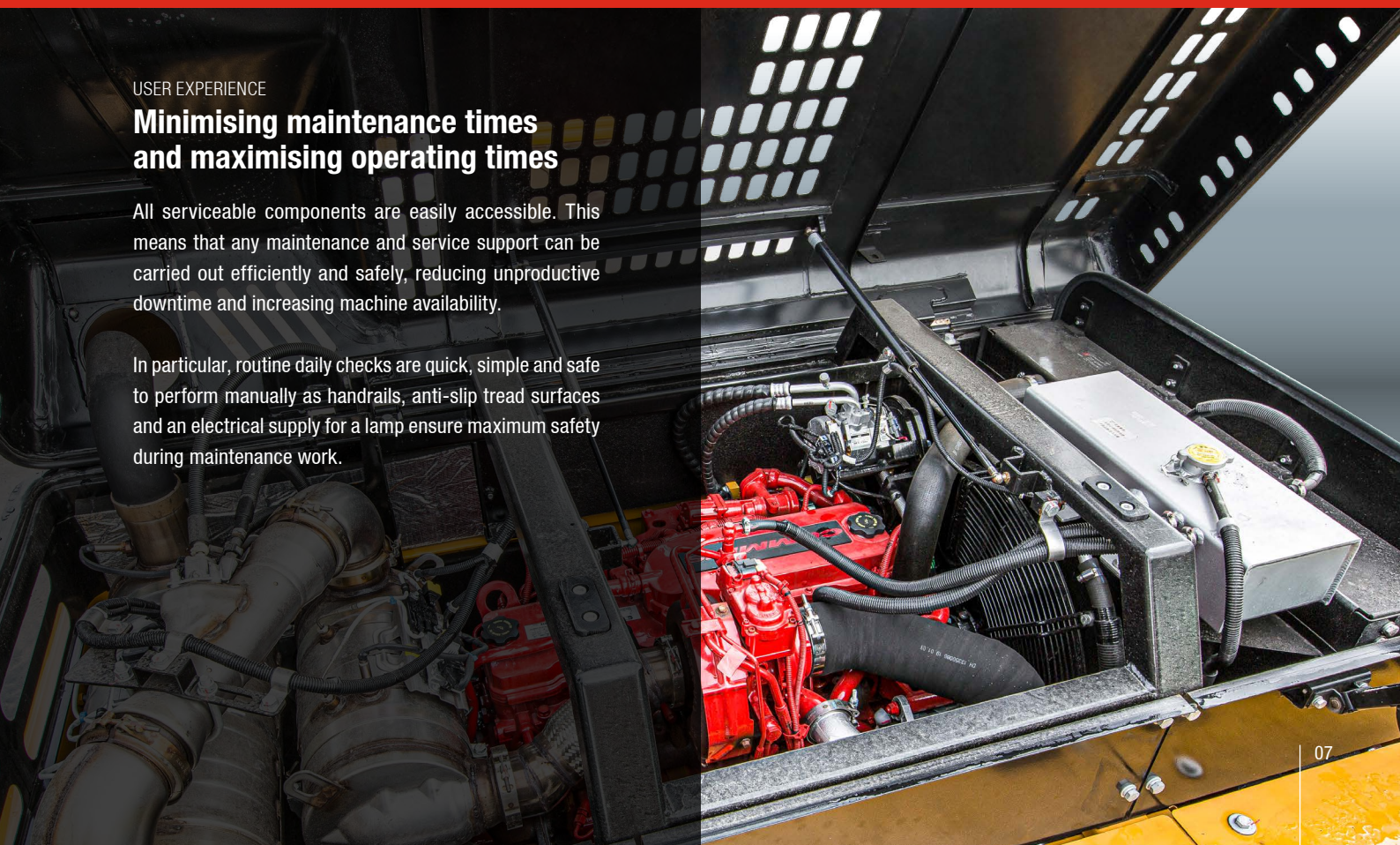
Good visibility is required for precise, quick work. In the worst-case scenario, the SY215C itself will provide sufficient lighting. The operating area is illuminated by two LED roof headlights, two LED headlights on the boom, one in the superstructure and an LED headlight facing backwards. The high-quality LED lights not only stand out thanks to their particularly good illumination, but also due to their low power consumption and extreme durability, while also being virtually maintenance-free.

USER EXPERIENCE

Minimising maintenance times and maximising operating times

All serviceable components are easily accessible. This means that any maintenance and service support can be carried out efficiently and safely, reducing unproductive downtime and increasing machine availability.

In particular, routine daily checks are quick, simple and safe to perform manually as handrails, anti-slip tread surfaces and an electrical supply for a lamp ensure maximum safety during maintenance work.



TECHNICAL SPECIFICATIONS

MOTOR

Model	CUMMINS QSB6.7
Type	Water-cooled, 6 cylinder, with commonrail and Adblue
Exhaust emissions	Stage V
Rated power	129kW / 2200 rpm
Max. torque	1472 Nm / 1400 rpm
Displacement	6700 ccm
Batteries	24 V

HYDRAULIC SYSTEM

Mainpump	Variable-capacity piston pump
Max. oilflow	2 x 241 l/min
Travelmotor	2 x Axial piston motor with parking brake
Swingmotor	Axial piston motor with swing holding brake

RELIEF VALVE SETTINGS

Implement circuit	343 bar
Power boost	373 bar
Swing circuit	275 bar
Travel circuit	343 bar
Pilot pressure	39 bar

SERVICE REFILL CAPACITIES

Fuel tank	370 l
Engine coolant	27.6 l
Engine oil	27 l
Drive (per side)	5.5 l
Adblue	45 l
Hydraulic oil tank	200 l

PERFORMANCE

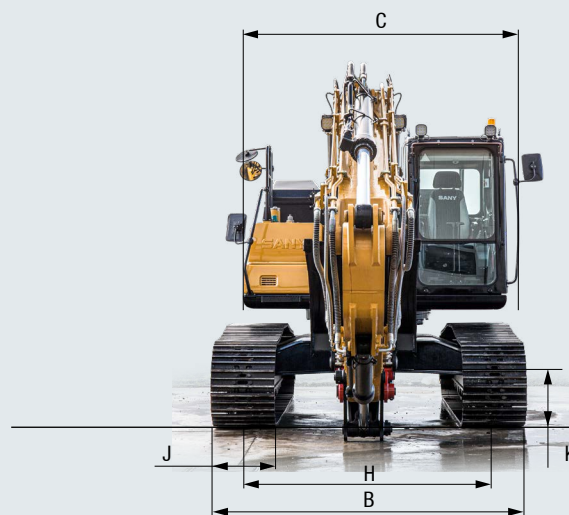
Swingspeed	11 rpm
Max. travel speed	High 5.4 km/h, Slow 3.3 km/h
Max. travel force	191 kN
Gradeability	35°
Bucket capacity	1.2 m³
Groundpressure	0.50 kg/cm²
Bucket digging force ISO	143 kN
Arm digging force ISO	115 kN

UNDER AND UPPER STRUCTURE

Boom length	5700 mm
Arm length	2950 mm
Bottomrollers	9
Toprollers	2
Rotation device	Planetary gear reducer driven by an axial piston motor, automatic hydraulic released slewing brake

OPERATING Weight

SY215C 24000 kg



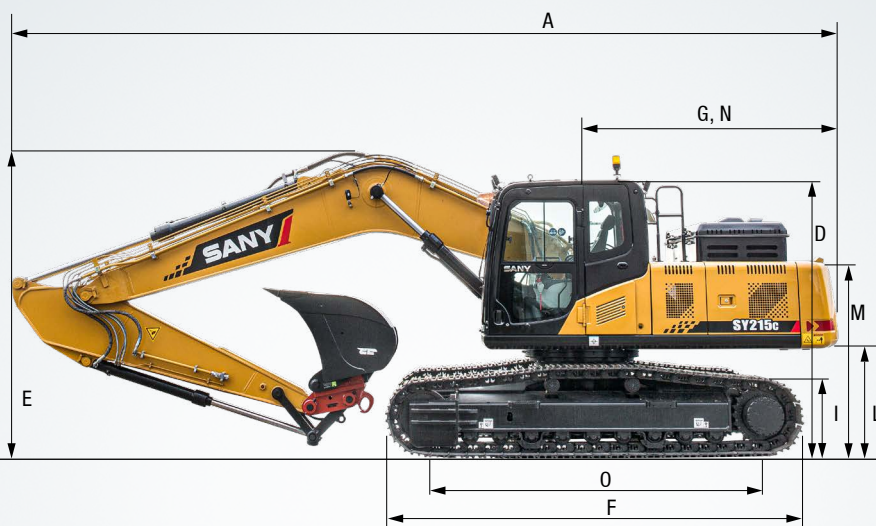
LIFTING CAPACITIES*

Load point height	Radius				Max. digging reach			
	3.0m/9.8ft	4.5m/14.8ft	6.0m/19.7ft	7.5m/24.6ft	Capacity			
7.5 m kg	4232 4232				3449	3449	6275	
24.6 ft lb	9330 9330				7604	7604	13834	
6.0 m kg	5360 5150				5290	5130	7360	
19.7 ft lb	11817 11354				11662	11310	16226	
4.5 m kg	5900 5143 5380 5010				5290	4610	8025	
14.8 ft lb	13007 11338 11861 11045				11662	10163	17692	
3.0 m kg	7499	7499	6570	5890	5690	4830	5380 4180 8370	
9.8 ft lb	16532	16532	14484	12985	12544	10648	11861 9215 18452	
1.5 m kg	8954	8197	7360	6330	6170	4540	5630 3880 8435	
4.9 ft lb	19740	18071	16226	13955	13602	10009	12412 8554 18596	
Ground kg	7388	7389	9726	7832	7123	5265	5689 3890	3409 3409 8230
line lb	16287	16290	21442	1726	15703	11607	12542 8576	7515 7515 18144
-1.5 m kg	11636	11637	9745	7110	7721	5160	5589 3851	3967 3730 7730
-4.9 ft lb	25653	25655	21484	16997	17022	11376	12321 8490	8746 8223 17041
-3.5 m kg	12677 12677 9026 7778 6691 5199				5161	4407	6870	
-9.8 ft lb	27948 27948 19899 17147 14751 11462				11378	9716	15146	
-4.5 m kg	9843 9843 7102 7102				5483	5483	5485	
-14.8 ft lb	21700 21700 15657 15657				12088	12088	12092	

* at 600 mm track pads width

DIMENSIONS

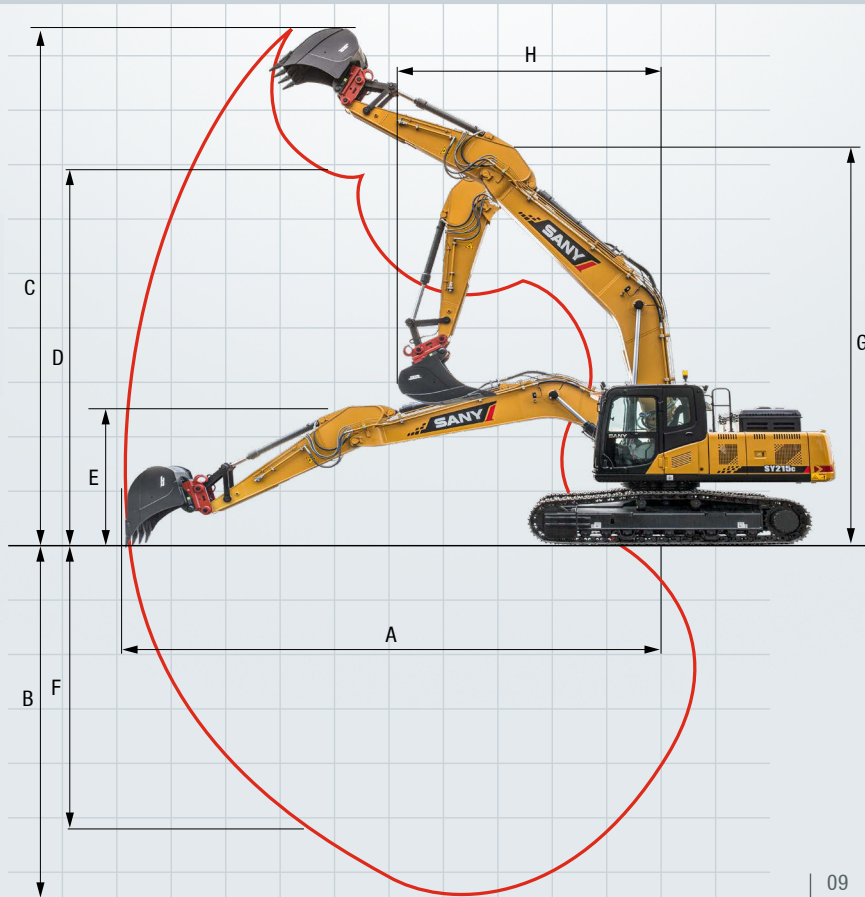
A	Transport length	9635 mm
B	Transport width*	3080 mm
C	Upperstructure carriage	2753 mm
D	Height over cabin/ROPS	2449 mm
E	Height of Boom – transport	3090 mm
F	Overall length of crawler	5173 mm
G	Tail length	2925 mm
H	Track gauge	2380 mm
I	Track height	949 mm
J	Track pads width	600 mm 700 mm 800 mm
K	Min. ground clearance	468 mm
L	Counterweigh clearance	1092 mm
M	Engine cover height	2615 mm
N	Tail swing radius	2950 mm
O	Center distance of tumblers	3640 mm



* at 600 mm track pads width

WORKING AREA

A	Max. digging reach	9745 mm
B	Max. digging depth	6450 mm
C	Max. digging Height	9470 mm
D	Max. dumping height	6735 mm
G	Overall height over arm by min. swing radius	7600 mm
H	Min. swing radius	3662 mm



Versatile power

With the SANY SY215C, you do not need to worry about additional parts. Everything you need for easy, comfortable work is included as standard.



OPERATORS COMFORT / CAB

Heater	●
Automatic air conditioning C/H	●
Radio and speaker	●
Armrests (adjustable)	●
Airsuspension seat	●
Heated seat	●
Wiper	●
Sprayer f. wiper	●
AUX 1 on Joystick	●
AUX 2 on Joystick	●
Removable front-window	●
Sky light openable	●
Integrated cooling box	●

WORKING EQUIPMENT

Boom and arm load holding valves with overload indicator	●
Double acting circuit for hydraulic quick coupler with piping	●
Hammer&Shear line proportional on Joystick with piping	●
Rotation line proportional on Joystick with piping	●
Rotation line on Joystick with piping	●
Flow adjustment for attachments	●

UNDERCARRIAGE

Steel tracks 700	●
Steel tracks 600	●
Steel tracks 800	●
Holes/loops for fixing	●

WORKING LIGHTS

Lights – front (LED)	●
Lights – boom (LED)	●
Lights – platform (LED)	●
Lights – back (LED)	●

ENGINE

Auto idle	●
Diesel filter	●
DOC	●

HYDRAULIC SYSTEM

Swing brake	●
2 speed travel	●
Piping for additional hydraulic function AUX 1	●
Piping for additional hydraulic function AUX 2	●
Hydr. Pre-pressure operating joysticks	●
Mainfilter	●

SAFETY

Battery master switch	●
Travel Alarm	●
Warning beacon	●
Camera (Rear & Side)	●
Handrails	●
Lockable hoods	●
Lockable fuel cap	●
Standard equipment ● Special option ●	●

The standard and special options differ depending on the country in which the crawler excavator is delivered. If you have any questions, please contact your dealer directly.

Parts supply – quick and reliable

With the purchase of a SANY crawler excavator you have made an investment in the future. Fast availability of spare parts is your guarantee of minimal downtimes and failure times.



A SERVICE YOU CAN RELY ON

Just as we do with our excavators, we also demand high quality and reliability of our service products. This underlines our equipment's performance in terms of their durability and their excellent price-performance ratio. After all, maintenance is crucial

for efficiency, cost-effectiveness and safety. Your SANY dealer is happy to help you with a comprehensive range of services to ensure that your machine continues operating efficiently in the long term.

SANY – flexible, fast and always there for you

Rapid assistance, tailored advice and a reliable supply of original parts – that is what we mean by a premium service.



* To locate your nearest dealer, visit <https://www.sanyuk.com>.



The added benefits SANY offers you:

- ✦ Experienced dealer network throughout England, Wales, Northern Ireland and Ireland
- ✦ Direct sales and support route in Scotland
- ✦ Dedicated SANY team based in the UK to support you and your product
- ✦ UK office and parts warehouse to ensure SANY excavators are fully supported

Detailed information in black and white

Handbooks and documents are available for all SANY crawler excavators, and these can help you with operation, maintenance, servicing and repairs. These include operating and maintenance instructions and technical specifications.





THE ALLROUNDER THAT PICKS UP EVERYTHING

The SANY SY215C is a powerful all-rounder which combines flexibility and power. It can therefore perform various tasks in a wide range of applications and its robust design means that it is comfortable even with difficult tasks and tough environments.

DURABLE AND ROBUST

The SY215C can be used whenever the going really gets tough. This means that it must be able to withstand a great deal. No problem, as with its reinforced, **extremely robust undercarriage** and **particularly clean, robot-welded seams**, the SY215C is exactly the right excavator for hard day-to-day work on construction sites.

COMFORTABLE WORKSTATION

You know there are good **ergonomics** when you can still concentrate on your work after several hours. No problem in the cockpit of the SY215C because the seat and controls have been **designed for practical requirements**. For example, the additional hydraulic circuits can be operated using the joysticks.

AGILE POWER

The stable **heavy-duty undercarriage** and its sheer mass provide the SY215C with the stability required to make **quick and powerful operational movements**. The excavator can therefore even tackle large tasks in a short time.

SAFETY AS A PRODUCTION FACTOR

The clever cab structure provides a clear view of the working area and the **camera supplied as standard** provides a good overview, including of the area behind the excavator. The **overload warning** and the **safety valve** are absolutely essential when the boom is used for lifting. Moreover, when performing maintenance and servicing tasks, handrails and anti-slip tread surfaces provide you with the required stability.

HIGH QUALITY AND TRIED-AND-TESTED

With its maximum torque of 1472 Nm at 1400 rpm, the very strong **six-cylinder**

Cummins engine brings an incredible amount of power.

EFFICIENCY AND POWER

In conjunction with the electronic fuel injection, the **autothrottle function** adjusts the engine speed to the power required. This means that the **smart hydraulic system** reduces the fuel consumption, engine wear and exhaust emissions. In addition, the excavator's **low maintenance requirements and long intervals between maintenance** save operating costs and increase the cost-effectiveness.

TECHNICAL HIGHLIGHTS

Engine	CUMMINS QSB 6.7
Rated power	129 KW / 2200 rpm
Max. torque	1472Nm / 1400 rpm
Max. travel speed	5.4 km/h
Swingspeed	11 rpm
Mainpump	Variable-capacity piston pump
Max. oilflow	2 x 241 l/min

Not all products are available in all markets. As part of our continuous improvement process, we reserve the right to modify specifications and designs without giving prior notice. The figures may contain additional options.

SANY

Quality Changes the World

SANY HEAVY MACHINERY (UK) LTD
info@sanyuk.com
www.sanyuk.com